

SAFER. FASTER. BETTER.



LaValley Industries

DRIVING PERFORMANCE,
SAFETY, AND RELIABILITY
IN BUILDING THE WORLD'S
INFRASTRUCTURE.

OUR TOOLS IN YOUR HANDS
GET JOBS DONE.

lavalleyindustries.com



TONGHAND®



DECKHAND®



PITPUMP™



PM1000™



LAVALLEY INDUSTRIES

FULL PRODUCT LINE

DECKHAND® MATERIAL HANDLING PRODUCTS

Smart, robust excavator attachments with modular functionality.

SEE PAGES 4-15



DECKHAND^S
18-23 METRIC TON
EXCAVATOR WEIGHT CLASS



DECKHAND^{LT}
20-36 METRIC TON
EXCAVATOR WEIGHT CLASS



DECKHAND[®]
20-36 METRIC TON
EXCAVATOR WEIGHT CLASS



DECKHAND^{DH5HP}
20-36 METRIC TON
EXCAVATOR WEIGHT CLASS



DECKHAND^L
40-50 METRIC TON
EXCAVATOR WEIGHT CLASS



DECKHAND^{XL}
60-75 METRIC TON
EXCAVATOR WEIGHT CLASS

TONGHAND® EXIT SIDE WRENCH

'Rig on a Stick' excavator attachment for Horizontal Directional Drilling.

SEE PAGES 16-19



TONGHAND^{XS}
14-18 METRIC TON
EXCAVATOR WEIGHT CLASS



TONGHAND^S
18-23 METRIC TON
EXCAVATOR WEIGHT CLASS

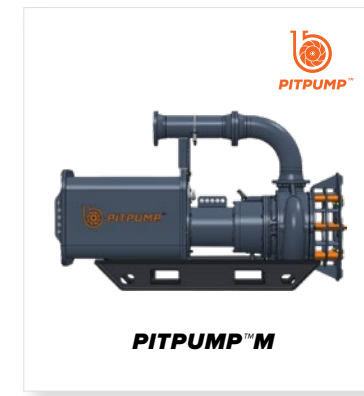


TONGHAND[®]
30-36 METRIC TON
EXCAVATOR WEIGHT CLASS

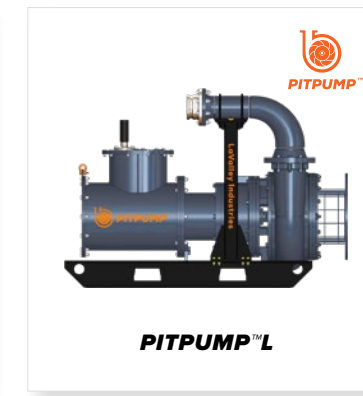
PITPUMP™ MUD PUMP

Versatile and purpose built for slurry cycling.

SEE PAGE 21



PITPUMP^M
1000 GPM MAX FLOW RATE
SMART FEATURES ENABLED WITH
EMPOWER™ GENERATORS



PITPUMP^L
1400 GPM MAX FLOW RATE
SMART FEATURES ENABLED WITH
EMPOWER™ GENERATORS

PM1000™ POLE GRAPPLE

Utility and light pole setting.

SEE PAGE 22



PM1000[™]
360° GRIP ROTATION CAPABILITY
ADVANCED GRAPPLE ATTACHMENT FOR
ARTICULATING (KNUCKLE BOOM) CRANES



EMPOWER™
A LAVALLEY INDUSTRIES COMPANY

EMPOWER™ GENERATOR UNITS

Efficient energy solutions for
reducing jobsite carbon footprint.

SEE PAGE 20



VIEW ALL
PRODUCTS

NEED SOMETHING SPECIAL?
WE OFFER CUSTOM SOLUTIONS

SAFER, FASTER, BETTER.
OUR TOOLS IN YOUR HANDS
GET JOBS DONE.

With unmatched strength, precision and total control—our line of smart attachments outperforms all other material handling methods.

DECKHAND® MODULARITY

PIPELINE CONSTRUCTION

Load lock valves, 360° rotation, shift and tilt functions allow the **DECKHAND®** with Pipe Arms to outperform all other pipe handling methods.

HORIZONTAL DIRECTIONAL DRILLING

The **DECKHAND®** with HDD Arms allows you to pick drill rod from a stack and perfectly position it from the safety of the excavator cab without additional ground personnel.

UTILITY INFRASTRUCTURE

Strong, safe and versatile, the **DECKHAND®** with Utility Arms allows you to position transmission utility poles, casings, and I-beams with safety, speed, and accuracy.

CONSTRUCTION SITE ACCESS

No more free swinging mats and no more near misses. Gain total control of your road building work with **DECKHAND®** equipped with Mat Arms.

MINING AND ENERGY

Your partner in land reclamation, mine infrastructure and facility construction: **DECKHAND®** is here to help get the big jobs done—all from the safety of the excavator.

CUSTOM SOLUTIONS

From specially-designed arms for handling flexible pipe to collaborating with companies on product enhancements—we offer custom solutions for any size task.





DECKHAND®

Engineered around optimal safety, the **DECKHAND®** by LaValley Industries allows precise load handling and placement without the need for a ground crew working in the vicinity of moving pipe, poles or road mats. **DECKHAND®** is designed to work safely in any weather condition, including wind, mud, snow and ice.

The **DECKHAND®** system is a modular design that consists of a main head unit used with a variety of interchangeable arms. The main head mounts to any brand of excavator—the excavator's auxiliary hydraulics then safely and efficiently power the **DECKHAND®** system. The interchangeable arms are used to pick up pipe, poles, casings, or road mats and securely lift, lower, rotate, and tilt the load under the total control of the operator. Arms can grip securely from an off-center position, allowing maximum control in areas with tight accessibility.

Achieve controlled, 360° precision material handling—whatever the conditions—with **DECKHAND®**.



DECKHAND® ensures that you will move pipe faster and more safely than ever before. No more straps. No more chains. No more dropped pipe.



PIPE HANDLING MADE EASIER AND SAFER THAN EVER BEFORE.

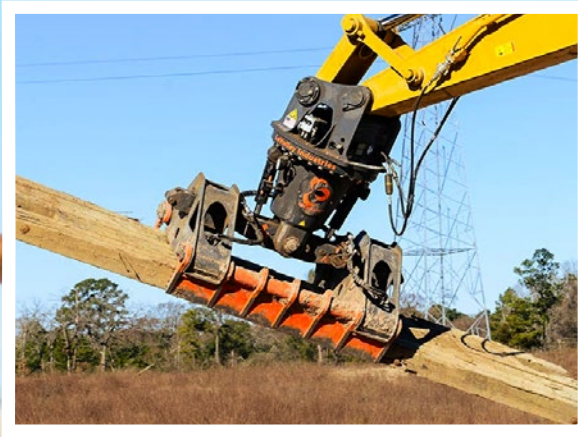
In the past, moving large amounts of pipe under tight time constraints meant personnel were required to quickly load and line up pipe with chains and straps, putting them in harm's way. **DECKHAND®** removes the ground crew from pipe transport and dangerous zones around the excavator, making pipe handling easier and safer than ever before.

- Easily adaptable to all brands and sizes of excavators
- Operator controls easily incorporated into excavator cab
- Load holding valves on all functions keep load secure, even if a hydraulic hose fails
- Load sensors provide clear information on grip status as pipe is moved
- In-cab display panel allows operator to monitor and adjust all functions, pressures, and volumes
- Tilt and shift functions allow pipe to be handled in multiple working angles
- Specialized Pipe Arm wear pads protect pipe coating and are designed for long wear and simple replacement



*Whether you're stringing, stockpiling, loading, staging or welding, **DECKHAND®** has you covered with today's safest, most effective pipe handling system.*





MEET THE FAMILY

6X6 MAIN BEAM

▲ DECKHAND® S

Delivering unparalleled speed, precision, and performance, the **DECKHAND® S** is as safe as it is agile. Outperforms all existing material handling methods.

- Mounts to any brand of excavator in the 18-23 metric ton class
- 360° Continuous Rotation
- Tilts up to 24.5° and able to shift load side to side 5.5" in either direction
- Load locking valves holds load securely regardless of hydraulic pressure
- In-cab display allows operator to safely monitor and adjust all functions, working parameters, and hydraulic settings from inside the excavator
- Requires auxiliary hydraulic circuit on excavator
- CE-compliant and designed to ASME Below-The-Hook Lifting Standards



▲ DECKHAND®

Strong, safe, and versatile, the **DECKHAND®** revolutionizes the way contractors handle loads. Unmatched speed and precision outperforms all other material handling methods.

- Mounts to any brand of excavator in the 20-36 metric ton class
- 360° Continuous Rotation
- Tilts up to 19° and able to shift load side to side 5.5" in either direction
- Load locking valves holds load securely regardless of hydraulic pressure
- In-cab display allows operator to safely monitor and adjust all functions, working parameters, and hydraulic settings from inside the excavator
- Requires auxiliary hydraulic circuit on excavator
- CE-compliant and designed to ASME Below-The-Hook Lifting Standards

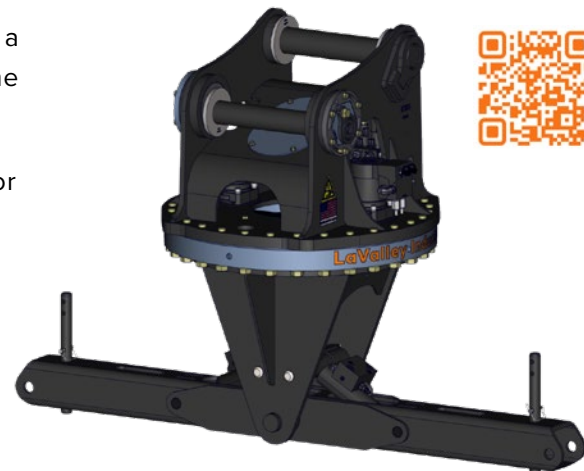


▲ DECKHAND® LT

Purpose-built and optimized for HDD, the **DECKHAND® LT** offers a safe and cost-effective way to handle drill pipe and tooling on the job site. The base model uses Directional Drilling LT Arms.

The **DECKHAND® LT-SE** model includes an electronics package for compatibility and functionality with other **DECKHAND®** arms.

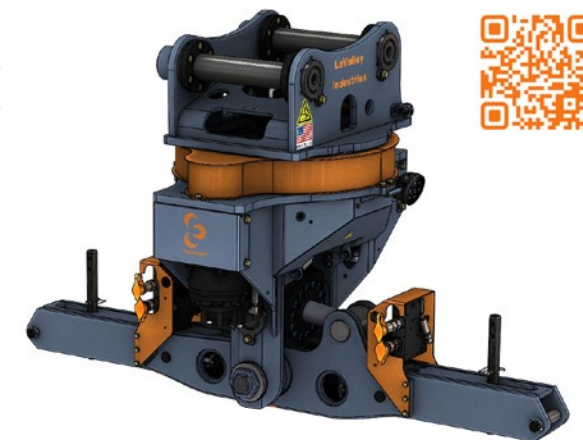
- Mounts to any brand of excavator in the 20-36 metric ton class
- 360-degree continuous rotation for maximum versatility
- Tilts up to 18° (all models) and shift load side to side 5.5" (SE model only)
- In-cab display for monitoring and easy adjustments
- Load hold valves guarantee grip regardless of hydraulic pressure
- Powered by the excavator's auxiliary circuit
- CE-compliant and designed to ASME Below-The-Hook Lifting Standards



▲ DECKHAND® 5HP

The HP stands for high performance. Engineered and built to accomplish the toughest jobs including vertical applications, the **DECKHAND® 5HP** is revolutionizing the way contractors handle utility poles, pipe and casings.

- Mounts to any brand of excavator in the 20-36 metric ton class
- 360° Continuous Rotation
- Tilts up to 25° and able to shift load side to side 5.5" in either direction
- Load locking valves hold load securely, regardless of hydraulic pressure
- In-cab display allows operator to safely monitor and adjust all functions, working parameters, and hydraulic settings from inside the excavator.
- Requires auxiliary hydraulic circuit on excavator and dedicated case drain line
- CE-compliant and designed to ASME Below-The-Hook Lifting Standards



DECKHAND® 6X6 MAIN BEAM ARM OPTIONS

PIPE ARM

- Individual sizes designed to handle 16", 20" and 24" diameter coated or uncoated pipe
- Handles pipe on and off trailers, rail cars, or pipe rack without disturbing adjacent pipe
- Sensors allow operator to monitor arm grip status while moving pipe
- Load locking valve system ensures pipe is never dropped
- Proximity sensors inform operator of correct positioning and clearance
- Pipe can be lifted from an off-center position
- Arms utilize long lasting wear pads to protect coated pipe from damage
- Fast and efficient at stringing pipe during pipeline construction
- Can handle pipe covered with snow, ice or dirt

INTERCHANGEABLE PIPE ARM

- Designed with interchangeable pipe tips in two arm housing sizes (IPAM and IPA)
- Interchangeable Pipe Arm Medium (IPAM) handles 14-18" diameter coated and uncoated pipe
- Interchangeable Pipe Arm (IPA) handles 4-12" diameter coated and uncoated pipe
- Handles pipe on and off trailers, rail cars, or pipe rack without disturbing adjacent pipe
- Sensors allow operator to monitor arm grip status while moving pipe
- Load locking valve system ensures pipe is never dropped
- Proximity sensors inform operator of correct positioning and clearance
- Pipe can be lifted from an off-center position
- Arms utilize long lasting wear pads to protect coated pipe from damage
- Fast and efficient at stringing pipe during pipeline construction
- Can handle pipe covered with snow, ice or dirt

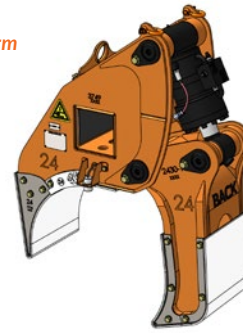
INTERCHANGEABLE MATERIAL HANDLING ARM

- Utilizes interchangeable material handling tips designed for flexible pipe
- Available for 6", 8", 10" diameter flexible pipe
- Sensors allow operator to monitor arm grip status while moving load
- Load locking valve system ensures load is never dropped
- Load can be lifted from an off-center position
- Arm tips can be equipped with wear pads to protect pipe or load from damage
- Allows fast, efficient material handling

MAT ARM

- Designed to precisely handle and position wood or composite mats up to 40' long and 12" thick
- Utilizes interchangeable tines to handle 3', 4', 5', and 8' mats
- Sensors allow operator to monitor arm grip status while moving mat
- Load locking valve system ensures mat is never dropped
- Mats can be lifted from an off-center position
- Mats can be placed with precision under total operator control
- Positive grip allows dirt and debris to be shaken off mats during removal

Pipe Arm



Interchangeable
Pipe Arm Medium
14-18"



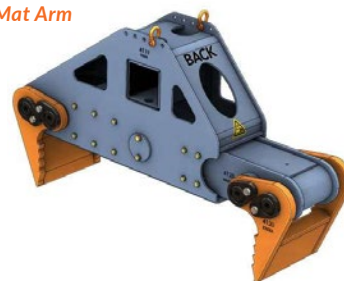
Interchangeable
Pipe Arm
4-12"



Interchangeable
Material
Handling Arm



Mat Arm



UTILITY ARM

- Utility Arm S handles 2-16" diameter pipe, poles, or casings
- Utility Arm HP handles 7-26" diameter pipe, poles, or casings
- Sensors allow operator to monitor arm grip status while moving load
- Load locking valve system ensures load is never dropped
- Arms utilize long lasting wear pads to protect coated pipe from damage
- Load can be lifted from an off-center position
- Fast and efficient at vertical applications, such as utility pole installation
- Ideal for positioning during welding, lowering in, and pipe extraction
- Able to handle bent pipe, elbows, tees and valves
- Can handle load covered with snow, ice or dirt

I-BEAM ARM

- Designed to precisely handle and position I-beams with W8-W16 IN flanges
- Sensors allow operator to monitor arm grip status while moving I-beam
- Load locking valve system ensures I-beam is never dropped
- I-beams can be lifted from an off-center position
- I-beams can be placed with precision under total operator control

ROLLER ARM

- Roller Arm S handles 2-16" diameter pipe, poles, or posts
- Roller Arm HP handles 7-24" diameter pipe, poles, or posts
- Capable of rotating a pipe, pole, or post 360° within its grip
- Features an innovative wheel design integrated within the Grab Arms
- Sensors allow operator to monitor arm grip status while moving pipe, poles, or posts
- Load locking valve system ensures pipe, poles, or posts are never dropped
- Pipe, poles or posts can be placed with precision under total operator control

DIRECTIONAL DRILLING ARM

- Directional Drilling Arm handles 3.5-9" diameter drill rod or uncoated pipe
- Directional Drilling LT Arm handles 4.5-9" diameter drill rod or uncoated pipe
- Handles pipe on and off trailers or pipe rack in any weather condition
- Sensors allow operator to monitor arm grip status while moving pipe
- Load locking valve system ensures pipe is never dropped
- Proximity sensors inform operator of correct positioning and clearance
- Pipe can be lifted from an off-center position

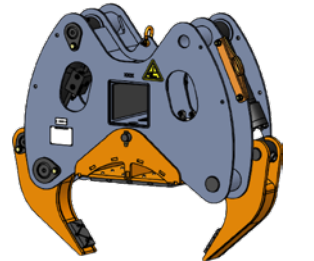
Utility Arm S



Utility Arm HP



I-Beam Arm



Roller Arm



Directional
Drilling Arm

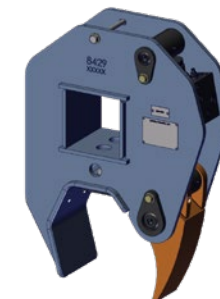


VIEW ALL ARM
COMPATIBILITY



VIEW ARM
CHANGEOUT
PROCESS

Directional
Drilling LT Arm





DECKHAND® L 8X8 MAIN BEAM ARM OPTIONS

PIPE ARM L

- Individual sizes designed to handle 20-42" diameter coated or uncoated pipe
- Handles pipe on and off trailers, rail cars, or pipe rack without disturbing adjacent pipe
- Sensors allow operator to monitor Arm grip status while moving pipe
- Load locking valve system ensures pipe is never dropped
- Proximity sensors inform operator of correct positioning and clearance
- Arms utilize long lasting wear pads to protect coated pipe from damage
- Pipe can be lifted from an off-center position
- Fast and efficient at stringing pipe during pipeline construction
- Can handle pipe covered with snow, ice or dirt

Pipe Arm L



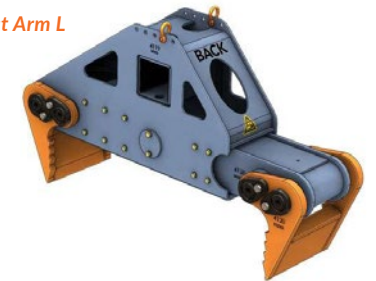
SIZES AVAILABLE:

20" | 24" | 26" | 28" | 30" | 32"
34" | 36" | 38" | 40" | 42"

MAT ARM L

- Uses interchangeable tines to handle 3', 4', 5', and 8' mats
- Sensors allow operator to monitor Arm grip status while moving mat
- Load locking valve system ensures mat is never dropped
- Mats can be lifted from an off-center position and placed with precision under total operator control
- Positive grip allows dirt and debris to be shaken off mats during removal

Mat Arm L



UTILITY ARM L

- Handles 20-42" diameter pipe, poles, I-beams, or casings
- Sensors allow operator to monitor Arm grip status while moving load
- Load locking valve system ensures load is never dropped
- Arms utilize long lasting wear pads to protect coated pipe from damage
- Load can be lifted from an off-center position
- Fast and efficient at vertical applications, such as utility pole installation
- Ideal for positioning during welding, lowering in, and pipe extraction
- Able to handle bent pipe, elbows, tees and valves
- Can handle load covered with snow, ice or dirt

Utility Arm L



ROLLER ARM L

- Handles 20-40" diameter pipe, poles, or posts
- Capable of rotating a pipe, pole, or post 360° within its grip
- Features an innovative wheel design integrated within the Grab Arms
- Sensors allow operator to monitor Arm grip status while moving pipe, poles, or posts
- Load locking valve system ensures pipe, poles, or posts are never dropped
- Pipe, poles or posts can be placed with precision under total operator control

Roller Arm L



PILING ARM L

- Designed to precisely handle and position 30-54" diameter uncoated pipe and pilings
- Unique paddle-tine design efficiently handles pipe, piles, rebar, and more
- Sensors allow operator to monitor Arm grip status while moving pipe
- Load locking valve system ensures pipe is never dropped
- Load can be placed with precision under total operator control

Piling Arm L



8X8 MAIN BEAM

DECKHAND® L

Extremely versatile, the **DECKHAND® L** is unmatched among all other pipe handling methods out on the ROW.

- Head unit mounts to any brand of excavator in the 40-50 metric ton class
- 360° Continuous Rotation
- Tilts up to 14° and able to shift pipe side to side 7.5" in either direction
- Load locking valves holds pipe securely, regardless of hydraulic pressure
- In-cab display allows operator to safely monitor and adjust all functions, working parameters, and hydraulic settings from inside the excavator
- Requires auxiliary hydraulic circuit on excavator and dedicated case drain line
- CE-compliant and designed to ASME Below-The-Hook Lifting Standards
- Optional stick-mounted camera allows operator to see in even the most difficult spaces



10X10 MAIN BEAM

DECKHAND® XL

The **DECKHAND®XL** handles the largest and heaviest pipe gently and safely, ideal for your toughest and most challenging pipeline and mining operations.

- Head unit mounts to any brand of excavator in the 60-75 metric ton class
- Load locking valves hold pipe securely, regardless of hydraulic pressure
- 360° Continuous Rotation
- Tilts up to 14° and able to shift pipe side to side 7.5" in either direction
- Requires auxiliary hydraulic circuit on excavator
- In-cab display allows operator to safely monitor and adjust all functions, working parameters, and hydraulic settings from inside the excavator
- Optional stick-mounted camera allows operator to see in even the most difficult spaces
- CE-compliant and designed to ASME Below-The-Hook Lifting Standards



DECKHAND® XL 10X10 MAIN BEAM ARM OPTIONS

PIPE ARM XL

- Individual sizes designed to handle 30-56" diameter coated or uncoated pipe
- Handles pipe on and off trailers, rail cars, or pipe rack without disturbing adjacent pipe
- Sensors allow operator to monitor Arm grip status while moving pipe
- Load locking valve system ensures pipe is never dropped
- Proximity sensors inform operator of correct positioning and clearance
- Arms utilize long lasting wear pads to protect coated pipe from damage
- Pipe can be lifted from an off-center position
- Fast and efficient at stringing pipe during pipeline construction
- Can handle pipe covered with snow, ice or dirt



SIZES AVAILABLE:
30" | 32" | 34" | 36" | 38"
40" | 42" | 48" | 56"

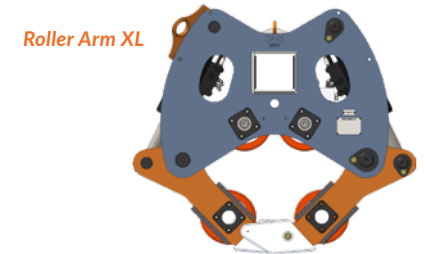
UTILITY ARM XL

- Handles 20-42" diameter pipe, poles, I-beams, or casings
- Sensors allow operator to monitor Arm grip status while moving load
- Load locking valve system ensures load is never dropped
- Arms utilize long lasting wear pads to protect coated pipe from damage
- Load can be lifted from an off-center position
- Fast and efficient at vertical applications, such as utility pole installation
- Ideal for positioning during welding, lowering in, and pipe extraction
- Able to handle bent pipe, elbows, tees and valves
- Can handle load covered with snow, ice or dirt



ROLLER ARM XL

- Handles 20-40" diameter pipe, poles, or posts
- Capable of rotating a pipe, pole, or post 360° within its grip
- Features an innovative wheel design integrated within the Grab Arms
- Sensors allow operator to monitor Arm grip status while moving pipe, poles, or posts
- Load locking valve system ensures pipe, poles, or posts are never dropped
- Pipe, poles or posts can be placed with precision under total operator control



PILING ARM XL

- Designed to precisely handle and position 30-54" diameter uncoated pipe and pilings
- Unique paddle-tine design efficiently handles pipe, piles, rebar, and more
- Sensors allow operator to monitor Arm grip status while moving pipe
- Load locking valve system ensures pipe is never dropped
- Load can be placed with precision under total operator control



When equipped with Pipe Arms, the DECKHAND®XL can pick up pipe from a stack without disturbing or damaging surrounding pipe.



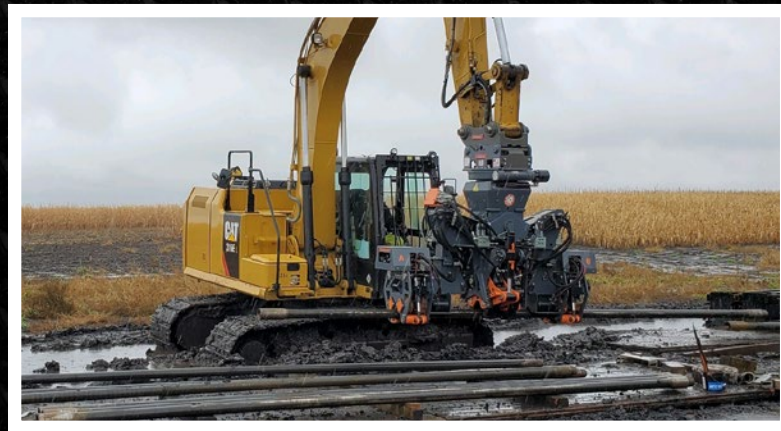
TONGHAND®

Engineered to be the HDD industry's ultimate exit-side tool, **TONGHAND®** allows drill rod to be threaded, unthreaded, and torqued with precision by a single operator from the comfort and safety of the excavator cab.

TONGHAND® eliminates the use of back-breaking wrenches and removes personnel from working in danger zones. Mounting to any brand of excavator, the **TONGHAND®** exit side wrench is safely and efficiently powered by the excavator's auxiliary hydraulics.

Telescoping roller arms are used to pick up drill rod and securely lift, tilt, shift, rotate and precisely position a single rod or drill string of 300' length or longer under the total control of the operator. The patented TongVise™ easily makes and breaks joints with guaranteed precision.

Whether working with drill rod, subs, reamers or other tooling, **TONGHAND®** saves you time and money while improving safety on the job site.



TONGHAND® offers a safe, efficient solution for everything on the exit-side from threaded product pipe and drill rod handling to precision torquing.



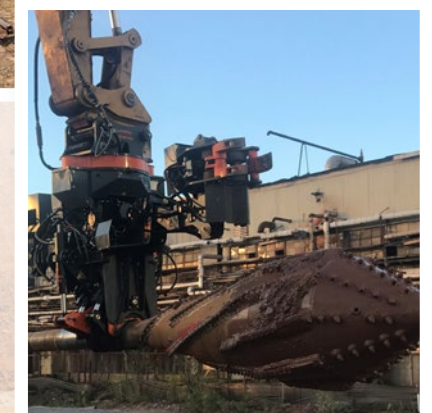
EXIT-SIDE WRENCH FOR THE HORIZONTAL DRILLING INDUSTRY.

Award-winning **TONGHAND®** is favored by HDD contractors worldwide as the all-in-one solution on the exit-side. Living up to its 'Rig on a Stick' nickname, **TONGHAND®** safely handles threaded rod and supply pipe around the job site while giving you total control from the excavator cab. Its patented TongVise™ precisely torques and un-torques pipe joints, reamers, subs, and other tooling while removing crew from danger zones. With **TONGHAND®**, you're in the driver's seat.

- Easily adaptable to all brands and sizes of excavators
- Operator controls easily incorporated into excavator cab
- Control system and in-cab display allow you to torque pipe joints to your specified torque value
- Gull wing design allows you to easily move arms to make and break reamers
- Tilt and shift functions allow pipe to be handled in multiple working angles
- Able to add and remove up to ten-joint tail strings
- Versatile and precise with 360° continuous rotation capability



Whether working with drill rod, subs, reamers or other tooling, **TONGHAND®** saves you time and money while improving safety on the job site.

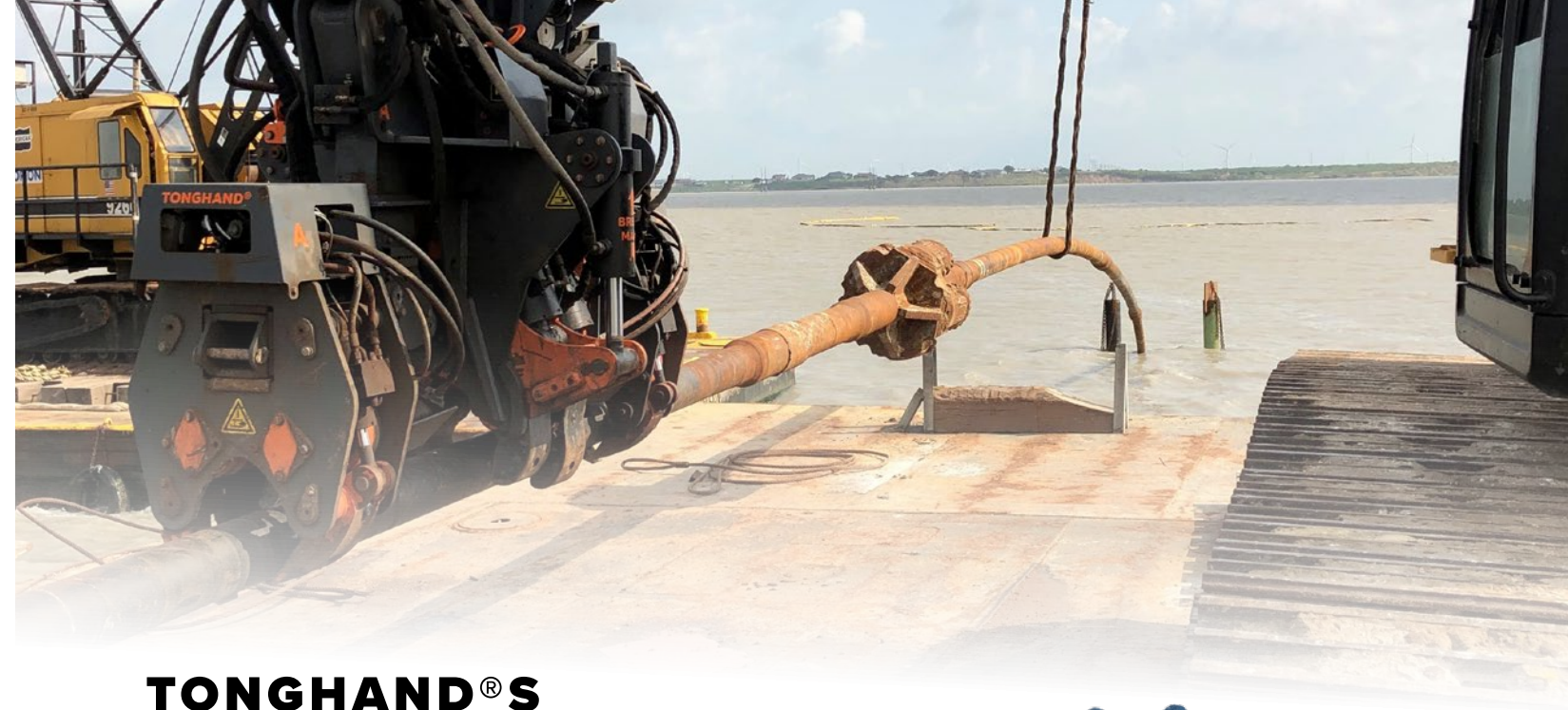
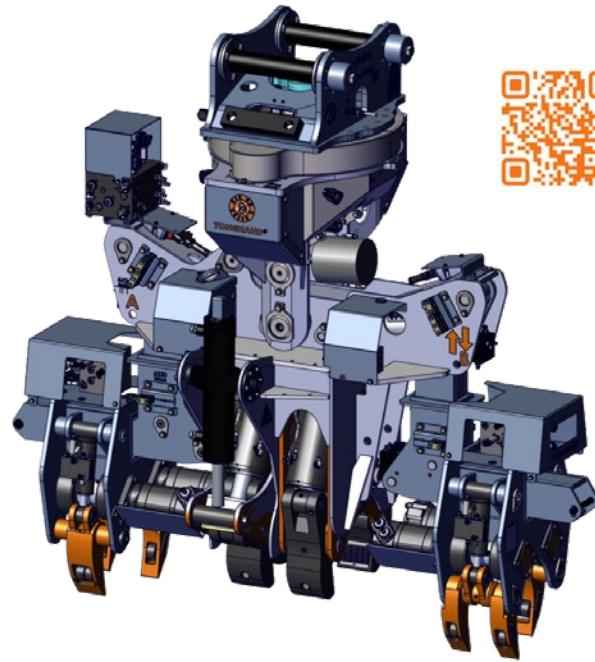


RIG ON A STICK

TONGHAND®

Delivering unparalleled speed, precision, and performance, **TONGHAND®** revolutionized the HDD industry with its safety and agility in exit-side operations. Out-performs all existing material handling methods while minimizing risk to your crew.

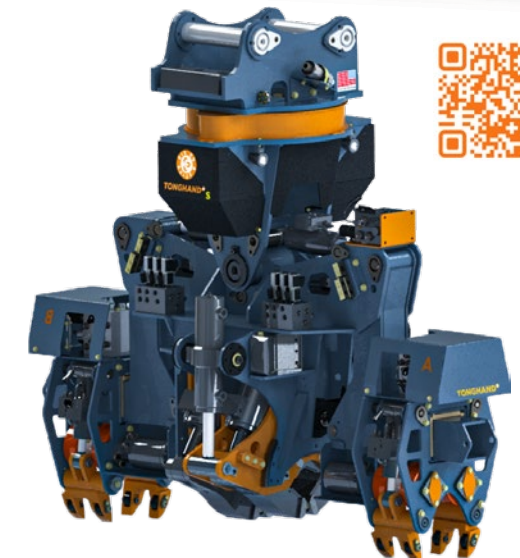
- Mounts to any brand of excavator in the 30-36 metric ton class.
- Patented **TongVise™** easily makes and breaks joints with guaranteed precision up to 120,000 foot pounds of torque.
- Works with reamers, adapter sub connections and all drill pipe connections ranging from 6.5" to 10" OD
- Patented roller arms and shift function allow you to thread and un-thread all connections with ease
- Gull wing design allows you to easily move arms out of way to make and break reamers up to 60"
- Can rotate, add and remove pipe strings up to 10 joints long
- Operator controls easily incorporated into excavator cab
- Tilts up to 20°, able to shift load side to side 7" in either direction
- Load locking valves hold load securely, regardless of hydraulic pressure
- Versatile design allows **TONGHAND®** to work as a pipe handler for precise placement of drill rod on rigs, racks, or trucks
- Requires auxiliary hydraulic circuit on excavator
- CE-compliant



TONGHAND® S

Engineered to be the HDD industry's ultimate exit-side tool, **TONGHAND® S** works with smaller diameter drill rod and tooling. As safe as it is agile, it eliminates the use of back-breaking wrenches and removes personnel from danger zones.

- Head unit mounts to any brand of excavator in the 18-23 metric ton class
- Patented **TongVise™** easily makes and breaks joints up to 70,000 foot pounds of torque
- Works with pipe reamers and adapter sub connections ranging from 4.13" to 6.75"
- Load locking valves holds load securely regardless of hydraulic pressure
- In-cab display allows operator to safely monitor and adjust all functions, working parameters, and hydraulic settings from inside the excavator
- Requires auxiliary hydraulic circuit on excavator
- CE-compliant



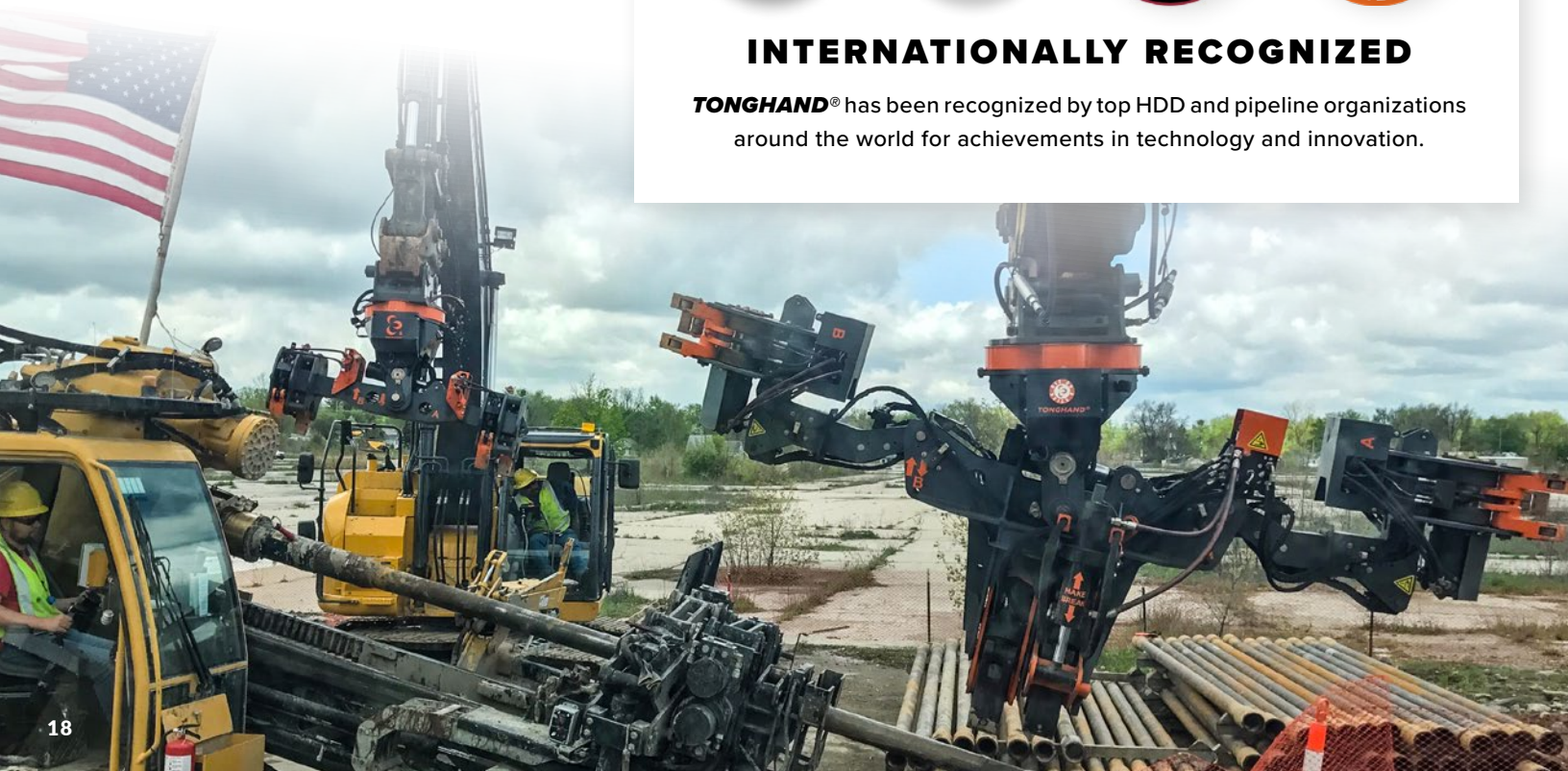
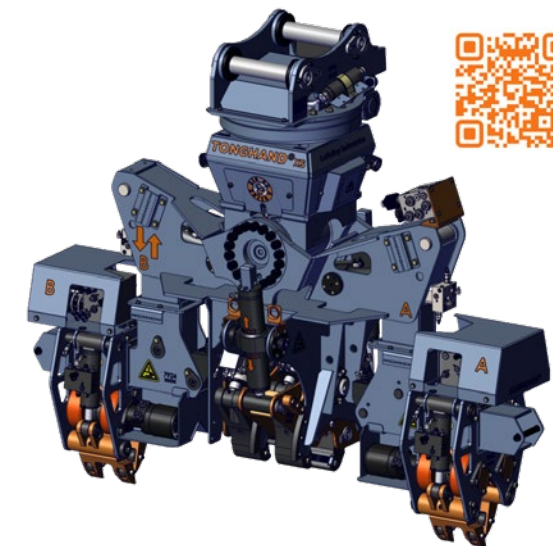
INTERNATIONALLY RECOGNIZED

TONGHAND® has been recognized by top HDD and pipeline organizations around the world for achievements in technology and innovation.

TONGHAND® XS

Engineered to be the HDD industry's ultimate exit-side tool, **TONGHAND® XS** works with smaller diameter drill rod and tooling. As safe as it is agile, it eliminates the use of back-breaking wrenches and removes personnel from danger zones.

- Head unit mounts to any brand of excavator in the 14-18 metric ton class
- Patented **TongVise™** easily makes and breaks joints up to 30,000 foot pounds of torque
- Works with pipe reamers and adapter sub connections ranging from 2.88" to 4.38"
- Load locking valves holds load securely regardless of hydraulic pressure
- In-cab display allows operator to safely monitor and adjust all functions, working parameters, and hydraulic settings from inside the excavator
- Requires auxiliary hydraulic circuit on excavator
- CE-compliant



EMPOWER™

A LAVALLEY INDUSTRIES COMPANY

EMPOWERING THE FUTURE

SMART POWER GENERATION FOR TODAY'S JOB SITES

Efficient Modulated Power (EMP) technology allows **EMPOWER™** generators to operate based on load demand, reducing fuel costs. Built for future connectivity needs in mind, **EMPOWER™** generators feature module expansion for telecom power, hydraulic power, uninterruptible power supplies, EV charging, and more.

- Active health monitoring allows for proactive maintenance, reducing unplanned downtime. Wireless capability allows remote oversight.
- Variable speed generator architecture allows for continuous load following resulting in unmatched fuel efficiency.
- Liquid cooling of electrical components maximizes power generation efficiency and increases reliability.
- External cooling/heating loop allows for enhanced performance and dependability of specialized EMPOWER™ implements.
- Inverter technology allows for powering a specialized implement while providing power for standard job site needs.
- Paralleling of generators can increase capacity by coupling multiple generators together to produce additional power.



EMP50™



EMP75™



EMPOWER™ generators utilize cutting edge inverter technology for high efficiency, plug and play grid capability for maximum versatility to meet any job site demand.



ROBUST HDD PUMPING SOLUTION FOR DRILL MUD CYCLING

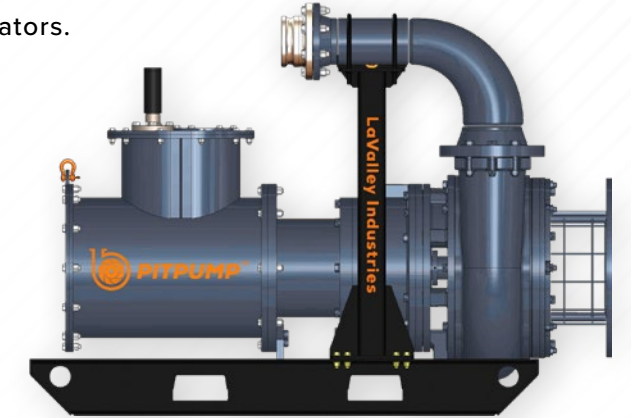
PITPUMP™ is the toughest, most versatile mud pump ever designed for the HDD industry. Liquid-cooled and designed to remain submerged, **PITPUMP™** is designed to handle the drilling demands while maintaining optimal power delivery—especially when used in tandem with our EMPOWER™ line of generators.

***PITPUMP™** is a powerhouse performer on the job site during reaming, swabbing, and pipe pull operations.*

MAX FLOW RATE
1400 GPM / 5300 LPM

DISCHARGE
6-8 IN / 152 MM

PARTICLE SIZE
5 IN / 127 MM



MAX FLOW RATE
1000 GPM / 3785 LPM

DISCHARGE
6 IN / 152 MM

PARTICLE SIZE
3 IN / 76 MM



WELCOME TO THE NEXT LEVEL

Smart generator tech and fuel efficiency meet the toughest industrial mud pumps.



INTRODUCING



INNOVATIVE POLE GRAPPLE FOR UTILITY INFRASTRUCTURE MAINTENANCE

Purpose-built for electrical and utility contractors, the **PM1000™** is a safe, sophisticated and seamless pole grapple for installing light and utility poles. With its secure grip and versatility of movement, the **PM1000™** increases productivity and reduces risk to crew and the general public.

A durable grapple attachment that adapts to any brand of articulating (knuckle boom) crane, the **PM1000™** handles any shape and size of pole, pipe, and post up to 1000 lbs. The **PM1000™** creates efficiencies that can save you time and money on your next pole setting project.

- Innovated Pole Rotate System™ for 360° rotation of poles, pipe, and posts while actively gripped for precise indexing and alignment during installation
- Ability to grip and rotate poles of various shapes, materials, and sizes in both horizontal and vertical applications
- Powered by your crane truck or prime mover's hydraulic and electric circuits
- Simple, sophisticated design for safe operation and maximum versatility



WHAT CAN WE HELP YOU GET A GRIP ON?

CUSTOM SOLUTIONS

Our products and accessories can be adapted to accommodate many tasks while continuing to outperform existing material handling methods. If you're looking to reduce project timelines, costs, and risk to personnel—call us!

INNOVATIVE SOLUTIONS FOR UNIQUE APPLICATIONS

The very team that created LaValley Industries products stands ready to assist you in creating a customized solution to meet your needs. From concept design to finished product, our award-winning team can create a unique solution in a timely manner with unmatched innovation.

- Customized **DECKHAND®** based versatile material handling solutions
- Customization of existing equipment, such as excavator modifications
- Specialized equipment design and manufacturing
- Mechanical engineering and design
- Hydraulic system engineering and design
- Electrical systems and design
- Rapid prototyping services



Utility Auger for Pole Setting



Utility Winch for Pole Setting



U-Beam Design for Mechanical Pipe Joining



Flexible Pipe Arms



*"I am often asked, 'How did you come up with the idea for the **DECKHAND**®?' It is a story that I love to share, as it speaks not just to the invention of **DECKHAND**® and*

***TONGHAND**®, but to the overall spirit of our company. Our ongoing goal in product development is exactly the same as the original **DECKHAND**® – finding a safer, faster, and better way to get the job done."*

- JASON LAVALLEY
 Founder & CEO of LaValley Industries

**OUR ADVANCED ENGINEERING IS DRIVING
 PERFORMANCE, SAFETY, AND RELIABILITY IN UTILITY
 INFRASTRUCTURE PROJECTS AROUND THE GLOBE.**



RENT OR BUY
 YOUR NEXT
 INNOVATIVE JOB
 SITE SOLUTION



VIEW OUR
 INTERNATIONAL
 ALLIANCE PARTNER
 NETWORK

DECKHAND®

TONGHAND®

EMPOWER

PITPUMP™

PM1000™

LaValley Industries.

1876 23rd Street SE
 Bemidji, Minnesota 56601

(218) 444-3030

lavalleyindustries.com