



FALCON

Hydraulic Yarder

FHY-AS



Reduce downtime, Improve cycle times

The Falcon Hydraulic Yarder is a standing skyline yarder developed to be used with the Falcon Claw Grapple Carriage. The Falcon Hydraulic Yarder eliminates the use of time-consuming guy ropes, reliance on constructing large infrastructure and landings while enabling harvest crews to operate in an agile and adaptable extraction sites and processes.

Fast drum speeds communicated by a live-data feed ensure that cycle times are quick and extraction of wood is precise. The Falcon Hydraulic Yarder gives you the capabilities you need for most demanding harvest settings in America.

The Falcon Hydraulic Yarder turns tight, difficult terrain into manageable, profitable harvest blocks.



01 Quick Set-up

With no time-consuming guy ropes to setup, the Falcon Hydraulic Yarder is movable in minutes.

02 Practical HMI

A practical Human-Machine Interface provides distance from the yarder and all the necessary information needed by the operator in a visual intuitive display.

03 Uncompromised Maneuverability

Designed with weight-balance considerations and compact settings in mind making difficult terrain, accessible.

04 Long Rope Lines

Not all hill faces are short and simple, which is why we've incorporated long ropes to accommodate those longer runs.

05 Safe & Secure

The machine also includes a tension monitoring system that alarms for over-tension events ensuring longevity in rope wear and maintenance.

06 Wider Operation Efficiencies

Folding boom for transportation and agile set-up which save on infrastructure costs are just some of the additional efficiencies from Falcon.

Additional Falcon Hydraulic Yarder Benefits



Integrated operator controls

The Falcon Hydraulic Yarder control system is a simple, intuitive joystick-based configuration integrated with a high quality camera in-cab monitor system. The integrated joysticks gives more control and autonomy to the operator for quicker turnaround times.



Large payloads to suit USA

A 12 ton safe-working load capability with 1805ft of skyline rope to accommodate for a variety of settings in United States of America's forestry topography.



Going the extra mile

Additional cable length where it matters most, decreasing line shifts and increasing options when harvest planning.



In-cab experience like no other

Simple yet intuitive in cab operator functions reducing fatigue, operator training providing agility of roles within your crew.



Move in hours - not days

With a collapsible spar, no guy ropes and over 3280 ft of strawline, adjusting lines within block or packing down is quick, ensuring more time for productive pulling.



Performance over infrastructure

The Falcon Hydraulic Yarder has high performance in low infrastructure blocks, saving time, environmental impacts and costs relating to infrastructure. This help provide more value to your contacts and forest managers.



Transport and logistic friendly

Reducing regulatory costs while maintaining safety and within best-practice the Falcon Hydraulic yarder balances the need for lift with convenience of quicker transportation with a 36 ft collapsible spar.



Eyes where you need them

Yard at ease with multiple high-quality camera views providing wide-range vision via two- drum cameras.



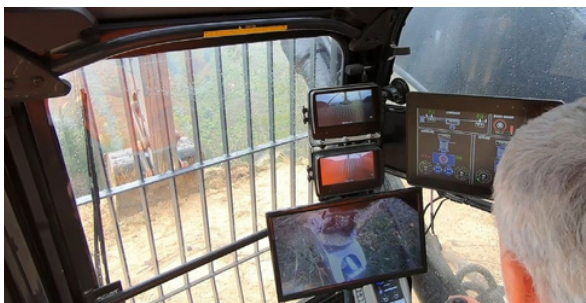
Seamless integration

In conjunction with being compatible with a wide range of motorized grapple carriages, the Falcon Hydraulic Yarder has been designed for seamless integration of the Falcon Claw mitigating troubleshooting between different manufacturers.



Continuous product support

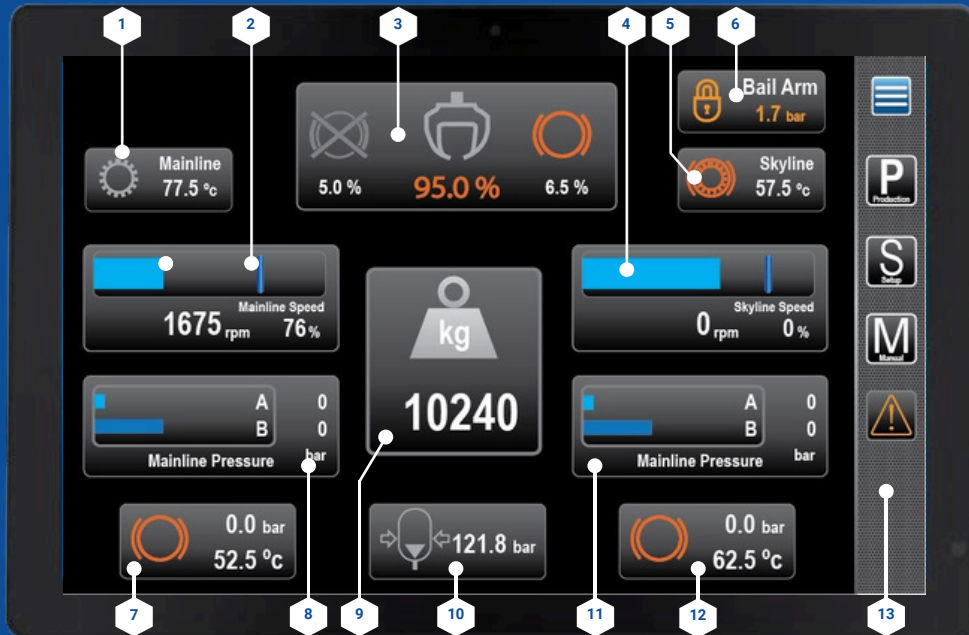
We understand the true cost of downtime and the necessity of maintaining productivity. Because of this we support our customers from day one through proactive communications and assistance ensuring your logging operations are successful.



FALCON Hydraulic Yarder Control System



Falcon Hydraulic Yarder Operator Interface



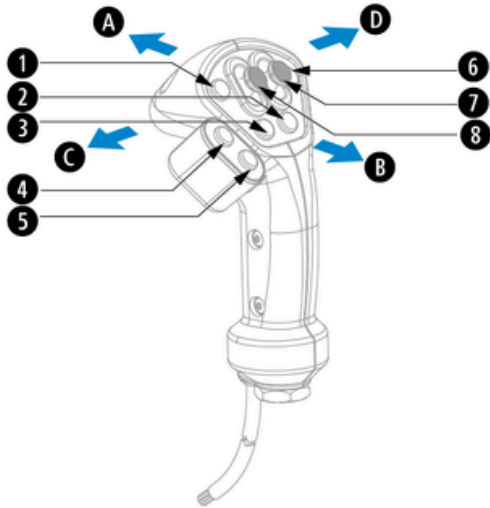
Touch Screen Interface

The Falcon Hydraulic Yarder touch screen interface is installed in the cab and provides access to the control system, enabling the operator to configure settings during the setup process and to operate the machine in a production environment.

- | | | |
|--------------------------------|----------------------------|----------------------------|
| 1 Mainline gearbox temperature | 6 Bail arm status | 11 Skyline pressure status |
| 2 Mainline speed status | 7 Mainline brake status | 12 Skyline brake status |
| 3 Carriage feedback | 8 Mainline pressure status | 13 Main operational panel |
| 4 Skyline speed status | 9 Skyline tension | |
| 5 Skyline gearbox temperature | 10 Brake accumulator | |

Falcon Hydraulic Yarder Operator Controls

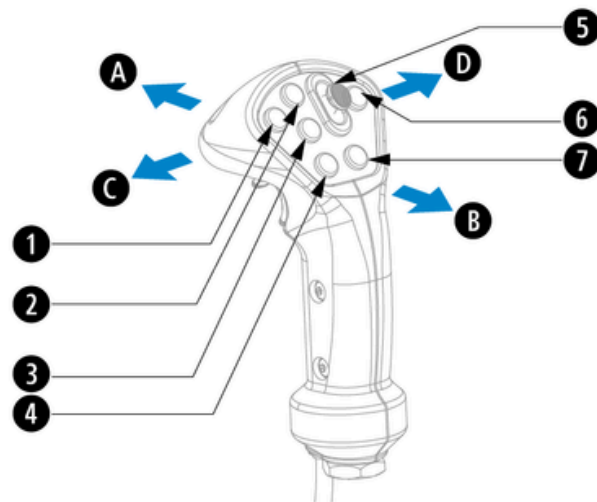
Righthand Joystick



- 1 Grapple carriage start button
- 2 Rotates the grapple carriage counter-clockwise
- 3 Rotates the grapple carriage clockwise
- 4 Opens the grapple on the carriage
- 5 Closes the grapple on the carriage
- 6 Grapple carriage stop button
- 7 Slider control to increase/decrease the speed & direction of strawline
- 8 Slider control to increase/decrease the speed & direction of mainline
- A Moves the boom forward
- B Moves the boom up
- C Moves the bucket in
- D Moves the bucket out

- 1 Programmable to operator preference
- 2 Programmable to operator preference
- 3 Programmable to operator preference
- 4 Sounds the machines horn
- 5 Slider control
- 6 Programmable to operator preference
- 7 Opens the radio channel for transmission
- 8 Programmable to operator preference
- A Move the dipper stick out
- B Move the dipper stick in
- C Move the bucket left
- D Move the bucket right

Lefthand Joystick



Synchronised for Success

The Falcon Claw is the logging industry's most widely used Motorised, fully removed controlled, Grapple Carriage. This hydraulically operated grapple significantly reduces Health & Safety risks to crew members whilst increasing the efficiency of the log extraction process.

With the 1750 model, which comes standard with the heavy-duty grapple, at an opening of 78" and has a payload of up to 17,500lb, faster cycle times are a given.

The claw gives
you the power of
full control while
carrying a larger
payload.

Scan here to
access the full
Falcon Claw
Specification



Technical Specifications - FHY-AS

Machine, cab & logistics

Base Machine

Minimum base machine weight	84,800 lbs
Total machine weight (including kit)**	115,000 lbs
Tower height*	36 ft
Effective yarding distance	1,380 ft
Minimum pressure & flow requirement	4800 PSI (550 lpm)
Minimum power requirement	268 hp

*Dependant on base machine

** On Komatsu PC390LC-11

Winch System

Winch unit	Independently driven 2-drum hydraulic winch system
Braking system	Multi-plate wet brake
Gearbox system	Planetary gearboxes

In-Cab

Operation interface	12" touch screen PLC
Camera system	Dual drum cameras
Electrical componentry	Tension pin, multiple pressure and temperature inputs, events and alarms, IO page
Operator controls	Integrated left and right hand SureGrip joystick combined with touchscreen controls
Control system	Integrated mobility equipment control system and sensors
Winch modes	Travel mode - Joystick disabled Set-up mode - Allows adjustment of guylines and strawline for preparation of operation Manual mode - Skyline and mainline drum controls Production mode - Complete automated functions

Cable & Miscellaneous

Skyline

Drum	Lagged drum core
Skyline diameter size	7/8" swaged wire rope
Skyline length	1,805 ft
Skyline maximum tension top layer	15.9 ton

Mainline

Drum	Lagged drum core
Mainline diameter size	3/4" swaged wire rope
Mainline length	1,805 ft
Mainline line speed	Up to 26 ft/sec
Mainline pulling power top layer	5.5 ton @ 13 ft/sec

Strawline

Strawline diameter size	3/8" 6x26 wire rope
Strawline length	3280 ft
Strawline top layer line speed	10 ft/sec

Miscellaneous

Standard extras	Bucket cylinder protection Tail hold rope block and connections Catwalks
Optional extras	Forestry purpose-built cab Handrails Fire suppression High and wide base

Transportation

Transport length*	40 ft 4"
Transport height*	12 ft 3"
Transport width*	11 ft 2"

*Dependant on base machine



falconforestryequipment.com