



**Weight**

Operation weight:  
approximately 77 ~ 100 tons

**Working reach / depth**

Maximum reach: 20 ~ 25 mtr.  
Maximum depth: 14 ~ 19 mtr.

**CAT LRE**

374 | 395



## CAT LRE

The STC LRE increases the reach of the machine a lot, especially forward and in the depth. It is very suitable for excavation works and profiling and can be used for dredging and underwater works.

Over the last 20 years, STC has optimized the LRE front in design and material.



### Usage of Cat parts



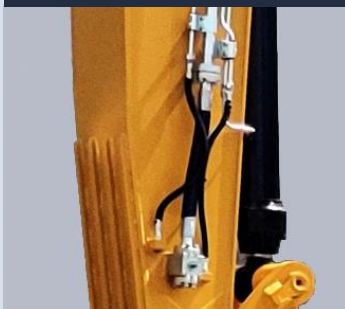
Where possible Caterpillar pins, bearings and cylinders are used

### LED Lightplan option



90 Watt LED lights including heavy duty protection

### HP/MP/QC



Full HP/MP/QC option possible at stick end

### Added weight

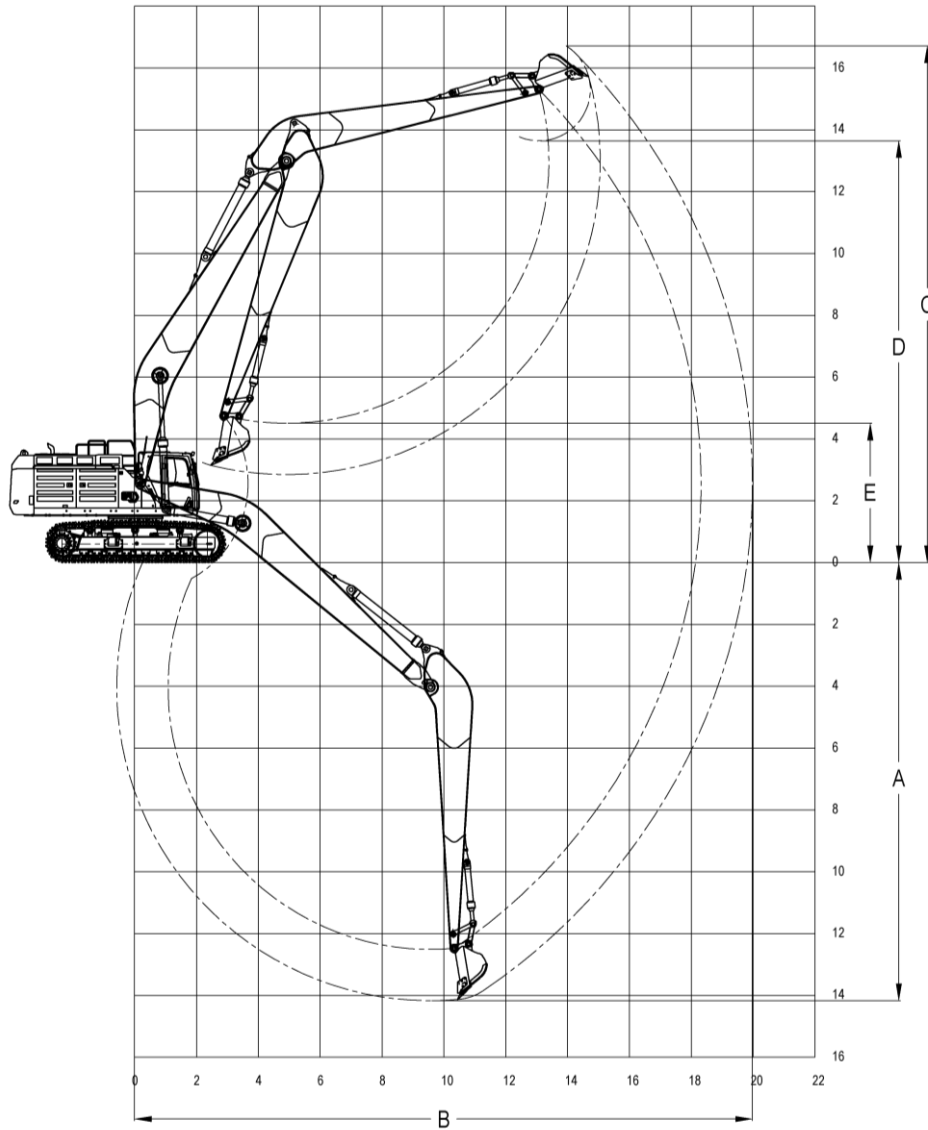


Additional weight mounted in between original counterweight



# CAT LRE

## 374 & 395 Lineup



Model:	A Max. Reach: mtr.	B Max. Depth: mtr.	C Max. Cutting Height: mtr.	D Max. Loading Height: mtr.	E Min. Loading Height: mtr.	Bucket Radius: mtr.	Counter- weight: Ton
CAT 374	20	14.2	16.7	13.6	4.5	1.66	16.2
CAT 374	25	19.1	19.6	16.6	4.3	1.58	16.2
CAT 395	21.5	15.2	17.4	14.3	4.7	1.66	20.5
CAT 395	25	18.1	20.4	17.4	5.2	1.58	20.5

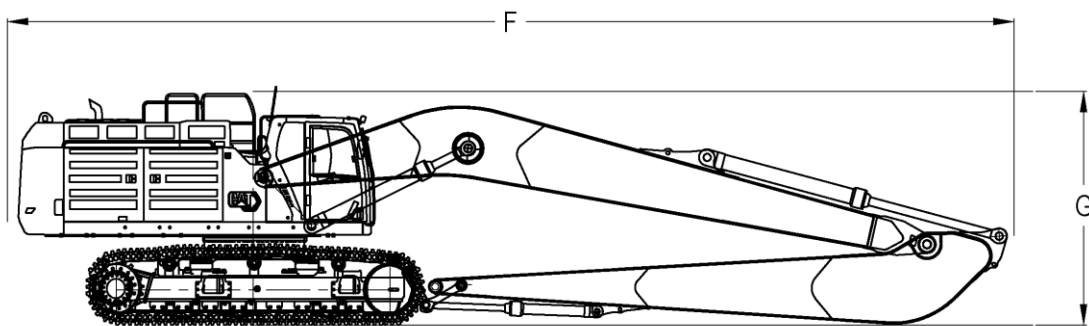
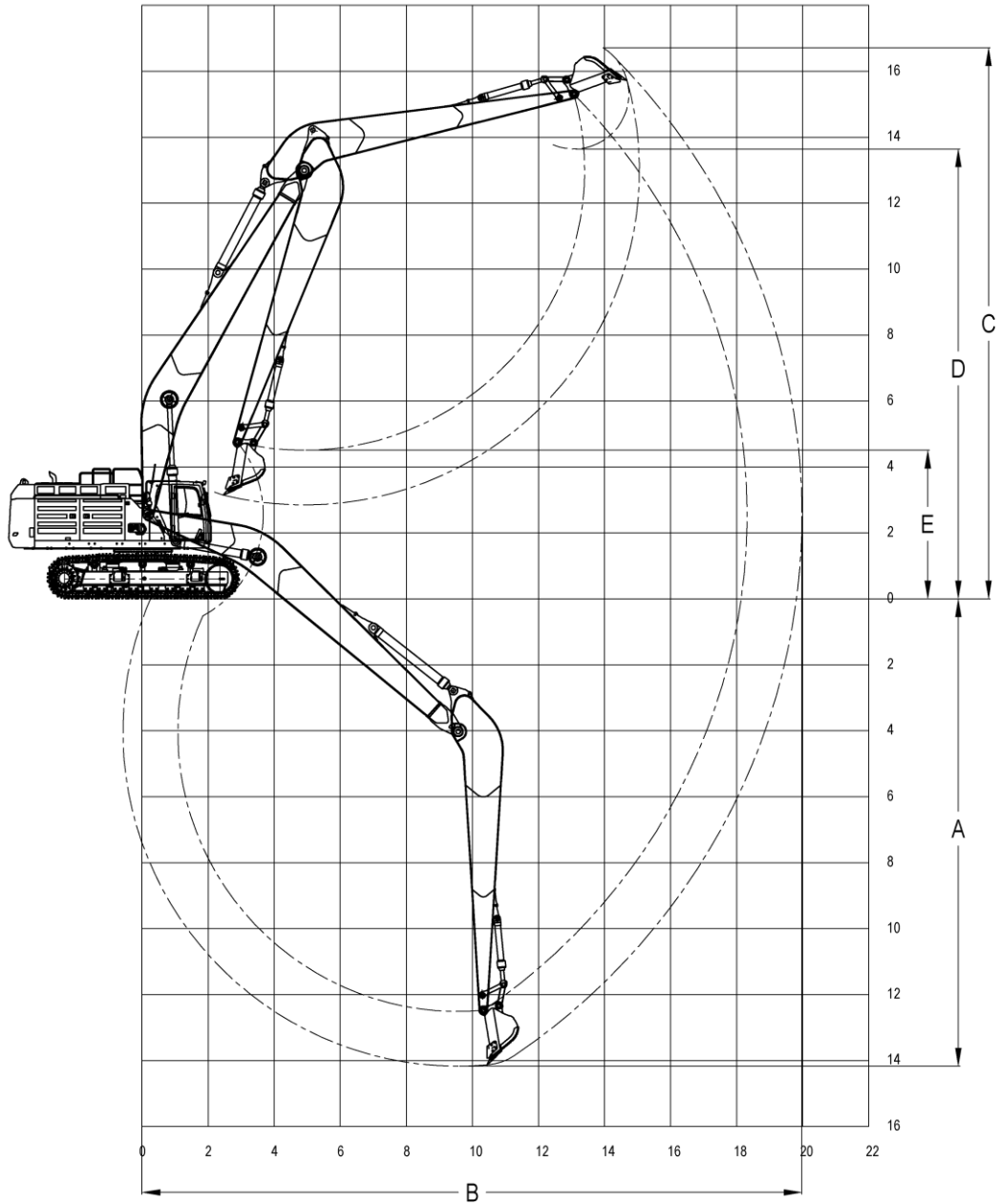
\* The above specifications are for reference only, actual working range may vary from machine models.

\*\* For the benefit of continuous product improvement, specifications are subject to change without prior notice.

# CAT 374 LRE

5-1490-801

20 mtr. reach

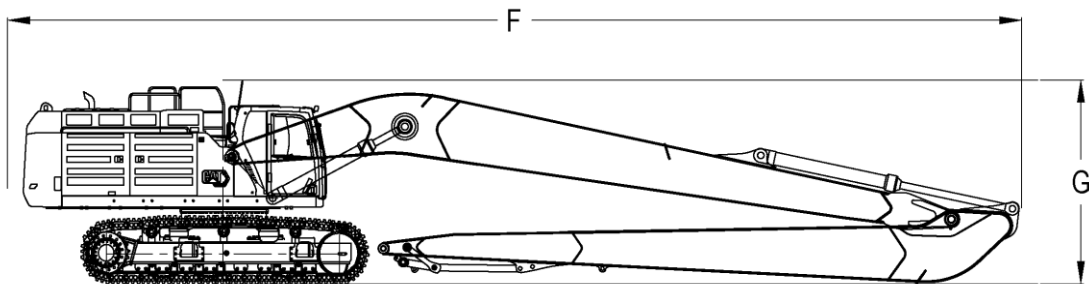
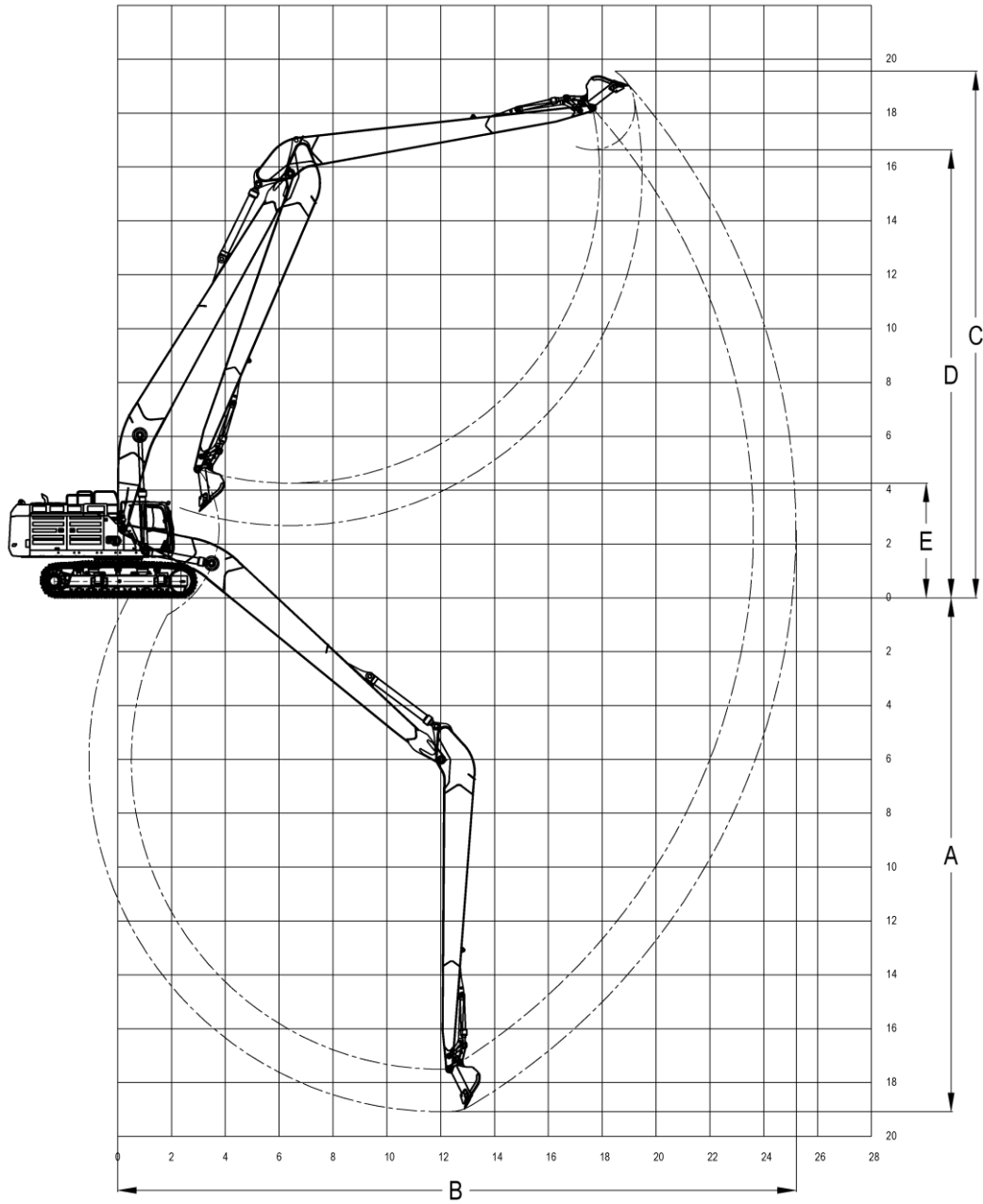




# CAT 374 LRE

5-1490-901

25 mtr. reach

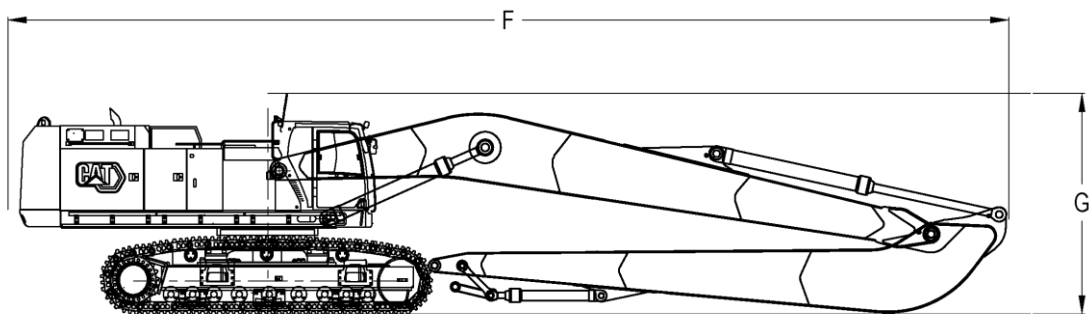
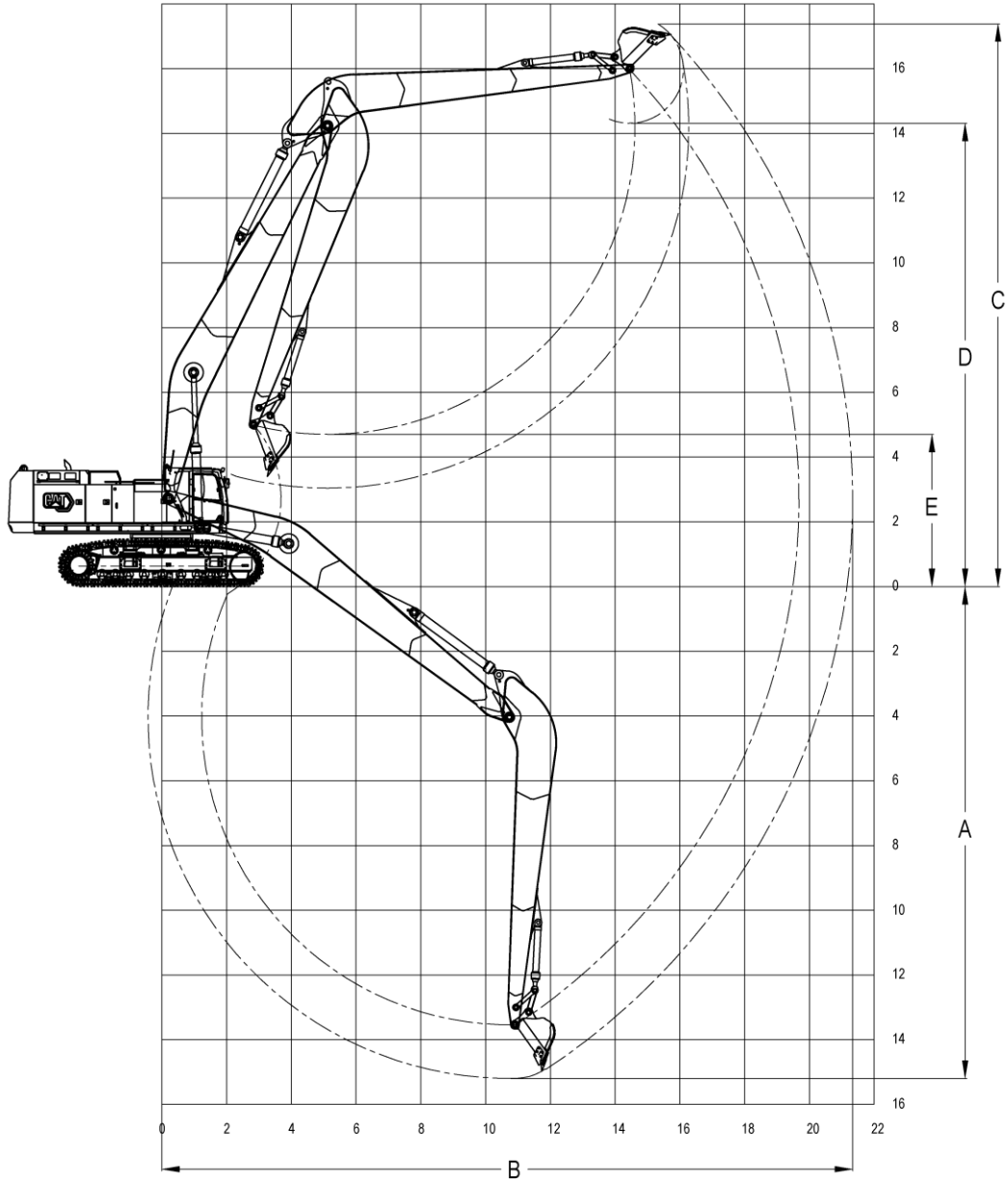




# CAT 395 LRE

5-1491-801

21.5 mtr. reach





MACHINE SPECS:	Standard
Boom Length	12500 mm
Stick Length	9500 mm
Bucket Radius	1660 mm
Stick Linkage	"TB" family
Total Machine Weight	99000 kg

REACH DIAGRAM:	Standard
A Maximum Digging Depth	15190 mm
B Maximum Reach at Ground Level	21340 mm
C Maximum Cutting Height	17380 mm
D Maximum Loading Height	14310 mm
E Minimum Loading Height	4700 mm

TRANSPORT TABLE:	Standard
F Transport Length	19100 mm
G Transport Height	4200 mm
Machine incl. Counterweight w/ Front Weight	99000 kg
Machine excl. Counterweight w/ Front Weight	78000 kg
Machine incl. Counterweight w/o Front Weight	81000 kg
Machine excl. Counterweight w/o Front Weight	60000 kg
Front Weight	19000 kg
Counterweight Weight (15500 kg standard + 5000 kg added)	20500 kg

Working pressure: 37.0 Mpa

Measurement over front

Measurement over side

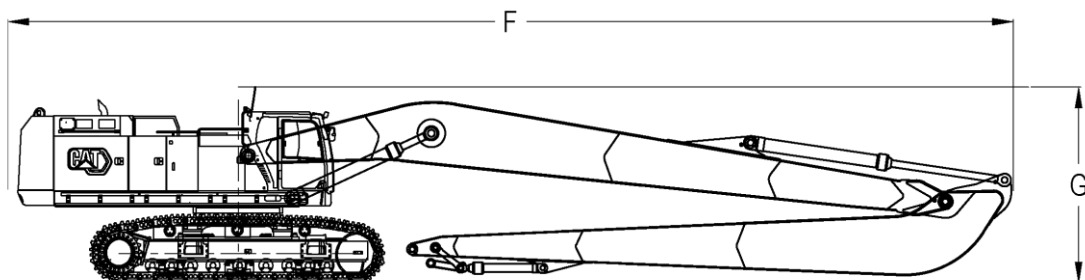
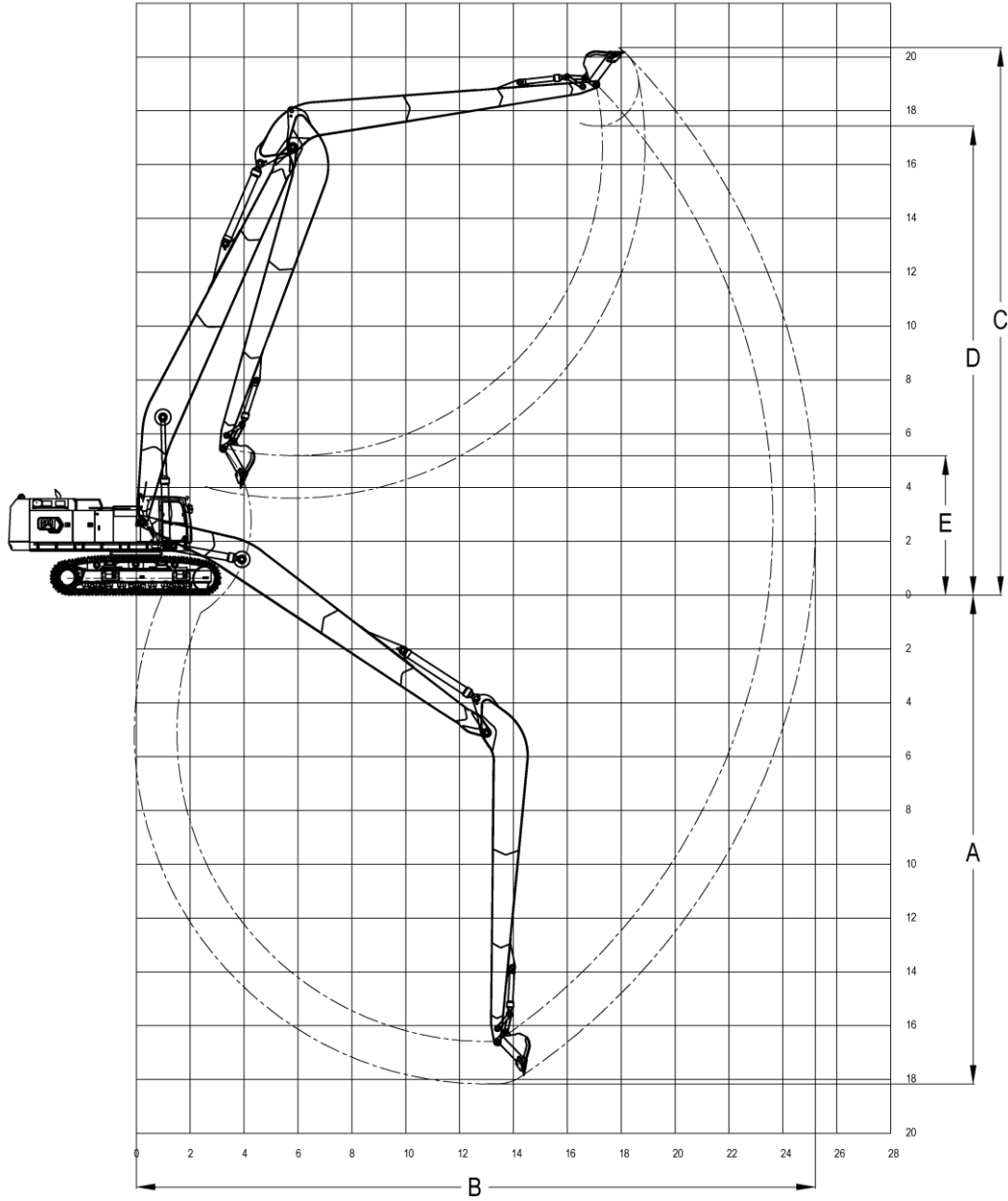
Load-point height	3 m		4,5 m		6 m		7,5 m		9 m		10,5 m		12 m		13,5 m		15 m		16,5 m		18 m		19,5 m		At max. reach				
																											m		
16,5 m																													
15 m																		*6,1	*6,1								*6	*6	15,3
13,5 m																		*6,4	*6,4								*5,9	*5,9	16,4
12 m																		*6,6	*6,6	*6,3	*6,3						*5,9	*5,9	17,3
10,5 m																		*6,8	*6,8	*6,7	*6,7	*6	*6				*6	*6	18,1
9 m																		*7,1	*7,1	*7,2	*7,2	*7,1	*7,1	*6,5	*6,5		*6,1	*6,1	18,6
7,5 m														*7,7	*7,7			*7,9	*7,9	*7,9	*7,9	*7,6	*7,6	*7	*7		*6,3	*6,2	19,1
6 m																													
4,5 m																													
3 m																													
1,5 m																													
0 m	*1,3	*1,3	*4,5	*4,5	*10,2	*10,2	*22,1	21,1	*17,9	16,6	*14,9	13,5	*12,8	11,2	*11,1	9,4	*9,8	7,9	*8,7	6,7	*7,8	5,8				*6,9	4,9	19,5	
-1 m	*3,3	*3,3	*5,8	*5,8	*10,4	*10,4	*19,1	*19,1	*18	15,6	*15,1	12,7	*12,9	10,5	*11,2	8,9	*9,8	7,5	*8,7	6,4	*7,7	5,5				*6,9	4,9	19,2	
-3 m	*5,4	*5,4	*7,6	*7,6	*11,7	*11,7	*19	*19	*17,7	14,9	*14,9	12,1	*12,7	10,0	*11	8,5	*9,7	7,2	*8,5	6,2	*7,5	5,4				*6,9	5,0	18,8	
-4,5 m	*7,5	*7,5	*9,6	*9,6	*13,5	*13,5	*20,2	18,7	*17,1	14,5	*14,5	11,7	*12,4	9,7	*10,8	8,2	*9,4	7,0	*8,2	6,1	*7,1	5,3				*6,9	5,1	18,3	
-6 m	*9,7	*9,7	*11,9	*11,9	*15,8	*15,8	*19,3	18,7	*16,2	14,3	*13,8	11,5	*11,9	9,5	*10,3	8,0	*8,9	6,9	*7,7	6,0									
-7,5 m	*12,1	*12,1	*14,5	*14,5	*18,6	*18,6	*17,5	*17,5	*14,9	14,3	*12,8	11,5	*11	9,5	*9,5	8,0	*8,2	6,9	*7	6,0									
-9 m	*14,7	*14,7	*17,5	*17,5	*17,8	*17,8	*15,3	*15,3	*13,2	*13,2	*11,4	*11,4	*9,9	9,6	*8,5	8,1	*7,2	7,0											
-10,5 m			*15,9	*15,9	*14,3	*14,3	*12,7	*12,7	*11,1	*11,1	*9,7	*9,7	*8,3	*8,3	*7	*7													
-12 m					*10,1	*10,1	*9,4	*9,4	*8,4	*8,4	*7,4	*7,4	*6,2	*6,2															
-13,5 m																													
-15 m																													

\* Indicates that the load is limited by hydraulic lifting capacity rather than tipping load.  
 The above loads are in compliance with hydraulic excavator lift capacity standard ISO 10567:2007.  
 They do not exceed 87% of hydraulic lifting capacity or 75% of tipping load.  
 Weight of all lifting accessories must be deducted from the above lifting capacities.  
 Lifting capacities are based on the machine standing on a firm, uniform supporting surface.

# CAT 395 LRE

5-1490-901

25 mtr. reach





*Specifications are subject to change without notice.  
No rights can be derived from the technical specifications.*

**STC**  
Vosmatenweg 3  
7742 SX Coevorden

The Netherlands  
info@stcbv.nl  
+31 (0)524 525 375

stcbv.nl